

Mt Solitary and Kedumba Valley Circuit



3 Days

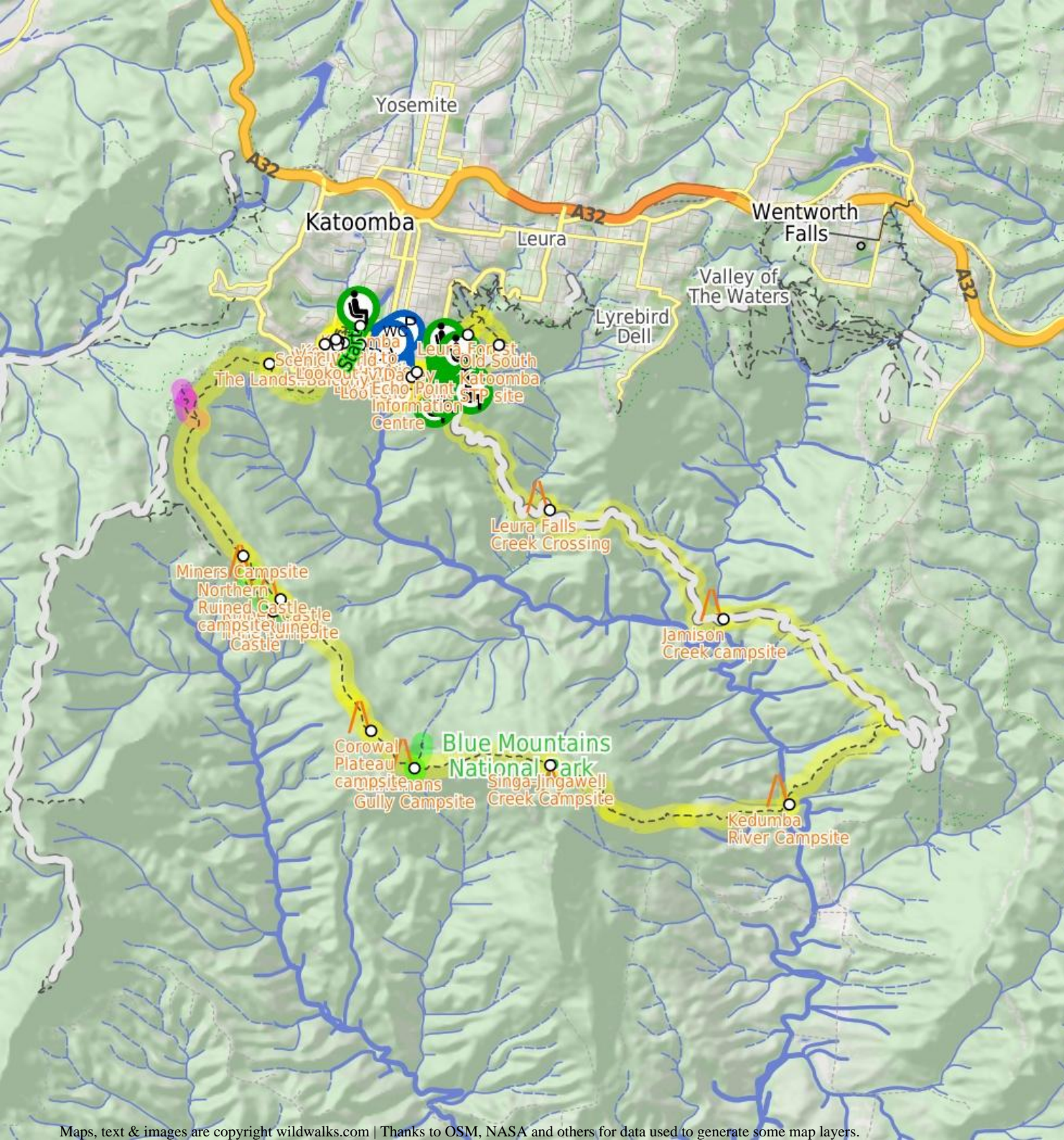
Experienced only

5

33.8 km Circuit

2863m

On this 3 day walk you will explore some remote areas around the Kedumba Valley, and some of the most famous spots in the Blue Mountains. The walk starts at Scenic World to head down Furber Steps and follow the Federal pass past the Scenic Railway, the land slide, to an optional side trip up Ruined Castle. The walk then climbs steeply up to Mount Solitary to stay the night. The next day the walk heads steeply down to cross the Kedumba River then follows the trail through the valley to stay near Leura Creek. Day three brings you back to the federal pass, the up the Giant Stair case, past the Thee Sisters and some grand lookouts back to the start of the walk.



961m

150m

Blue Mountains National Park

Scenic World

Scenic World is one of the most renowned tourist attractions of Katoomba and the Blue Mountains. Located on the cliffs of the Jamison Valley, visitors can enjoy a ride on the Scenic Railway (the world's steepest incline railway) or the Scenic Cableway, into the Jamison Valley, and explore the Scenic Walkway from the base. Alternatively, the Scenic Skyway offers a bird's eye view over the valley, with a glass floor to enhance the experience. Scenic World also features a revolving restaurant, a cafe and a kiosk, in addition to the documentary theatre and souvenir shop. Rides can be purchased, starting from \$16 for adults and \$10 for children, and combination or family passes are available. [More info.](#)

Vaniman's Lookout

Vaniman's Lookout is a fenced, long and narrow lookout on the cliff edge, opposite Reids Plateau. The view looks directly over the Three Sisters across the Kedumba Valley, under the Scenic Skyway. The lookout was considered one of the finest views on the Three Sisters in the 1900's. The lookout was named after Chester Melvin Vaniman in 1905, a well-know adventurer and artist from the USA, who visited the Blue Mountains in 1903. [More info.](#)

Juilets Balcony

Juilets Balcony is a spectacular lookout, perched on top of a rock buttress near Orphan Rock, under the Scenic Skyway. The lookout provides sweeping views of the start of the Kedumba Valley, from Katoomba Falls to the Three Sisters. The lookout is accessed by a staircase, off the Furber Steps track. The fenceline continues along the lookout, forming a long, fenced balcony.

Rainforest Lookout

Unlike many lookouts in the area, Rainforest Lookout does not offer sweeping valley views. Instead, this lookout offers an opportunity to get up close and personal with the canopy of the rainforest. Spend some time in the cool shade listening to the birds and Witches Leap creek passing by. A sign at the lookout explains that there once were wood-fired barbeques here for picnics, but removed due to the toll on the local environment.

Before You walk

Bushwalking is fun and a wonderful way to enjoy our natural places. Sometimes things go bad, with a bit of planning you can increase your chance of having an enjoyable and safer walk. Before setting off on your walk check

- 1) Weather Forecast ([BOM Central Tablelands District](#))
- 2) Fire Dangers ([Greater Sydney Region](#))
- 3) Park Alerts ([Blue Mountains National Park](#))
- 4) Research the walk to check your party has the skills, fitness and equipment required
- 5) Agree to stay as a group and not leave anyone to walk solo

Think before you TREK

The 'Think before you TREK' program developed by NSW Police & NPWS promotes the benefits of planning ahead for your bushwalking trip by using an easy to remember acronym:

- T** Take adequate supplies of food, water, navigation and first aid equipment.
- R** Register your planned route and tell friends and family when you expect to return.
- E** Emergency beacon (PLB's) should be carried on walks with significant gaps in mobile coverage (check terrain profile).
- K** Keep to your planned route and follow the map and walking trails.

Topo Maps

The maps provided on wildwalks are helpful, but there are times where you may need maps covering a broader area. Maps that cover this walk include;

1:50 000 Map Series:Six Foot Track

1:25 000 Map Series:89302N JAMISON, 89301S KATOOMBA

1:100 000 Map Series:8930 KATOOMBA

Grade

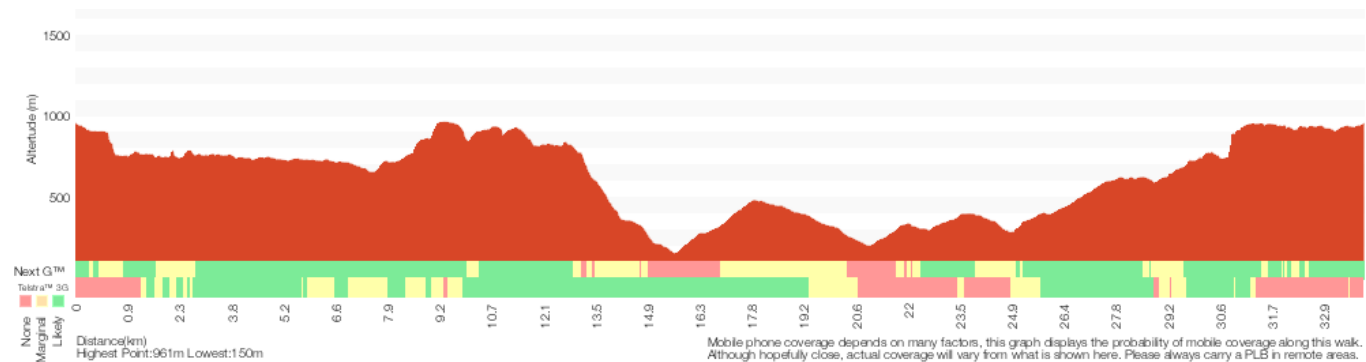
This walk has been graded using the AS 2156.1-2001. The overall grade of the walk is determined by the highest classification along the whole track.



Grade 5/6
Experienced only

Length	33.8 km Circuit
Time	3 Days
Quality of track	Rough unclear track (5/6)
Signs	No directional signs (5/6)
Experience Required	High level of bushwalking experience recommended (5/6)
Weather	Forecast, unforecast storms and severe weather likely to have an impact on your navigation and safety (5/6)
Infrastructure	No facilities provided (5/6)

*** This walk passes through very remote areas and sections have no visible track. At least one person in your group should have training and experience in off track walking and navigation. Even with these notes and a GPS these extra skills and equipment are required.**



Are you ready to have fun?

Please ensure you and your group are well prepared and equipped for all possible hazards and delays. Check park closures, weather information and Fire Danger Rating before setting out. Optional side trips and alternate routes noted are not included in this walk's overall grade, length or time estimate. Please allow extra time for resting and exploring areas of interest. The authors, staff and owners of wildwalks take care in preparing this information but will not accept responsibility for any inconvenience, loss or injury you may experience. Please take care, have fun - Happy Walking. **Experienced walkers only: This walk passes through very remote areas and sections have no visible track. At least one person in your group should have training and experience in off track walking and navigation. Even with these notes and a GPS these extra skills and equipment are required.**

Getting there You can get to Scenic World (gps: -33.7286, 150.301) by car or bus. Car: There is free parking available.

This is a circuit, so you will finish back at the start.

Find up to date and more information including; travel directions, weather, park closures and walker feedback at <http://wild.tl/msakvc>

0 | Scenic World

Scenic World is one of the most renowned tourist attractions of Katoomba and the Blue Mountains. Located on the cliffs of the Jamison Valley, visitors can enjoy a ride on the Scenic Railway (the world's steepest incline railway) or the Scenic Cableway, into the Jamison Valley, and explore the Scenic Walkway from the base. Alternatively, the Scenic Skyway offers a bird's eye view over the valley, with a glass floor to enhance the experience. Scenic World also features a revolving restaurant, a cafe and a kiosk, in addition to the documentary theatre and souvenir shop. Rides can be purchased, starting from \$16 for adults and \$10 for children, and combination or family passes are available. [More info.](#)

0 | Scenic World

(170 m 4 mins) From the Scenic World main entrance, this walk follows the 'Prince Henry Cliff Walk' signs down the concrete steps and around to the back of the building, where it comes to a wooden footbridge that curves around behind the main car park. At the end of the footbridge, this walk comes to an intersection with the Prince Henry Cliff Walk.

Continue straight: From the intersection, this walk follows the bush track down the gentle hill, winding down some wooden steps as the track bends around to the right. It then arrives at the signposted intersection of the 'Prince Henry Cliff Walk' and the track to the base of the Scenic Railway.

0.17 | Int of Prince Henry Cliff Walk and Katoomba Falls

(40 m 1 mins) Turn right: From the intersection, this walk heads down the steep wooden steps, following the signs to the bottom of the Scenic Railway. The walk comes to the intersection of Vanimans Lookout at the bottom of the steps.

0.21 | Vaniman's Lookout

Vaniman's Lookout is a fenced, long and narrow lookout on the cliff edge, opposite Reids Plateau. The view looks directly over the Three Sisters across the Kedumba Valley, under the Scenic Skyway. The lookout was considered one of the finest views on the Three Sisters in the 1900's. The lookout was named after Chester Melvin Vaniman in 1905, a well-known adventurer and artist from the USA, who visited the Blue Mountains in 1903. [More info.](#)

0.21 | Vanimans Lookout

(110 m 3 mins) Turn right: From Vanimans Lookout, this walk follows the bush track heading away from the bottom of the wooden steps. The track winds around the side of the hill and down the steep metal stairs. At the bottom, the walk comes to the intersection of the Katoomba Falls Round

Walk and Juliets Balcony track (unsignposted).

0.32 | Optional sidetrip to Juliets Balcony

(10 m) Veer right: From the intersection, this walk heads up the short set of wooden steps, winding up to the raised rock platform, and along the bush track to the edge of the fenced-off rock shelf. At the end of this side trip, retrace your steps back to the main walk then Turn right.

0.32 | Juliets Balcony

Juliets Balcony is a spectacular lookout, perched on top of a rock buttress near Orphan Rock, under the Scenic Skyway. The lookout provides sweeping views of the start of the Kedumba Valley, from Katoomba Falls to the Three Sisters. The lookout is accessed by a staircase, off the Furber Steps track. The fence line continues along the lookout, forming a long, fenced balcony.

0.32 | Int of Katoomba Falls Round Walk and Juliets Balco

(60 m 1 mins) Veer left: From the intersection, this walk follows the long set of wooden steps winding down the side of the hill. After this, the walk flattens out for a short distance then continues up a short set of wooden steps to the intersection of the Round Walk and the Furber Steps track.

0.38 | Int of Katoomba Falls Round Walk and Furber Steps

(10 m) Turn right: From the intersection, this walk follows the 'Base of Scenic Railway' signpost down the wooden steps to the bottom, where it comes to the Rainforest Lookout.

0.39 | Rainforest Lookout

Unlike many lookouts in the area, Rainforest Lookout does not offer sweeping valley views. Instead, this lookout offers an opportunity to get up close and personal with the canopy of the rainforest. Spend some time in the cool shade listening to the birds and Witches Leap creek passing by. A sign at the lookout explains that there once were wood-fired barbecues here for picnics, but removed due to the toll on the local environment.

0.39 | Rainforest Lookout

(20 m) Turn right: From the Rainforest Lookout, the track follows the bush track heading past the base of the wooden steps and then through the forest for a short while, until it reaches the signposted intersection of the Underfalls Walk.

0.41 | Optional sidetrip to Katoomba Falls

(180 m 6 mins) Turn left : From the intersection, this walk follows the 'Underfalls Walk' sign down a short set of steps and across a small waterfall using the wooden bridge (This creek flows from Witches Leap all the way down to Veras Grotto). Once past the falls, the track continues through the rainforest, winding along the well-defined path until arriving at Katoomba Falls Lookout, right at the base of the falls. At the end of this side trip, retrace your steps back to the main walk then Turn left.

0.41 | Rainforest Lookout

Unlike many lookouts in the area, Rainforest Lookout does not offer sweeping valley views. Instead, this lookout offers an opportunity to get up close and personal with the canopy of the rainforest. Spend some time in the cool shade listening to the birds and Witches Leap creek passing by. A sign at the lookout explains that there once were wood-fired barbecues here for picnics, but removed due to the toll on the local environment.

0.41 | Int of Furber Steps and Katoomba Falls Lookout Tra

(30 m 1 mins) Continue straight: From the intersection, this walk follows the 'Scenic Railway' sign along the bush track, winding through the forest for a short while before passing a large rock overhang with a wooden bench seat underneath. The walk continues down a set of stairs until reaching the

signposted 'Queen Victoria Lookout'.

0.44 | Queen Victoria Lookout

(10 m) Continue straight: From the intersection, this walk heads up the short metal staircase to the intersection of the Queen Victoria Lookout at the top.

0.45 | Int of Furber Steps and Lynes Point Track

(30 m 1 mins) Turn right: From the intersection, this walk follows the bush track heading away from the short metal staircase, winding along the side of the hill to the top of some concrete steps where there is a 'Furber Steps' signpost. From here, the walk continues down the concrete steps for a short distance until it comes to the signposted 'Furber Lookout'.

0.48 | Furber Lookout

(90 m 7 mins) Continue straight: From the Furber Lookout, this walk heads down the concrete steps that zigzags steeply down to the bottom of the cliffs. The track then flattens out and continues through the forest with the hand railing on the right, crossing a short boardwalk and coming down to the signposted intersection of the Vera's Grotto track.

0.57 | Optional sidetrip to Vera's Grotto

(30 m 3 mins) Continue straight: From the intersection, the walk follows the 'Vera's Grotto' sign along the bush track, winding down a set of wooden steps to Vera's Grotto Lookout at the bottom. At the end of this side trip, retrace your steps back to the main walk then Turn left.

0.57 | Vera's Grotto

Vera's Grotto is a pleasant little spot located amongst the cascades on Witches Leap creek. This is a great area for lunch on a hot day, as it is always kept cool by the falls and the shade from the surrounding trees. When venturing to the grotto, you may be lucky enough to spot the Whistler and Yellow Robins. Superb Lyrebirds are also heard and even seen frequently in the surrounding area.

0.57 | Int of Furber Steps and Veras Grotto Track

(130 m 6 mins) Turn right: From the intersection, this walk goes down the stairs. These zigzag down the hill and, at several points, go under overhangs in the cliff. The walk continues steeply downhill (occasionally on metal stairs) until reaching an intersection with a bush track signposted 'Federal Pass'.

0.7 | Int of Furber Steps and Scenic Railway Track

(170 m 4 mins) Turn right: From the bottom of Furber Steps, this walk follows the 'To base of scenic railway' sign keeping the handrail on the left, and following the flat bush track. This track passes through a small gate over a metal bridge at the bottom of the Scenic Railway.

0.87 | Scenic Railway (Bottom Platform)

(1.3 km 46 mins) Continue straight: From the bridge over the bottom of the Scenic Railway, this walk follows the signs to 'scenic walkway', passing a replica of a mining cart, as well as an old mine. Just past this, the walk comes to a pipeline that runs down the hill collecting fresh water, signposted as drinkable. Continuing past the old mine shafts along the boardwalk, this walk comes to an intersection with a bush track going slightly off to the right. This is signposted as the way to the Landslide.

Continue straight: From the intersection, the walk follows the wide track and signposts towards the 'landslide' (keeping the cliffs on the right). The walk winds along a bush track with small boulders strewn along it. There are a number of old mine shafts just off the track and some interesting historical items. The track continues under Malaita Point before breaking out of the vegetation to a worthy view of the valley, just before the landslide. As the

track comes to the old landslide site, it become rougher with plenty of boulders over the track. There are also excellent views of the cliffs above and the landslide as the vegetation is quite sparse here.

2.21 | The Landslide

'The Landslide' is a large rockfall going into the valley approximately 100m. There is a good vantage point for the landslide from under the cliffs to the east, and a great but more distant view from Narrow Neck lookout. The landslide occurred in 1931 after a few days of rumbling. There has been much debate as to whether this event was helped along by erosion and coal mining in the area at the time.

2.21 | Landslide

(1.6 km 42 mins) Continue straight: From the eastern side of the Landslide, the walk heads across the face of the landslide (keeping the cliff on the right). At this point, the track is quite rough, with frequent boulders making it a slight scramble. On the other side of the landslide, the track narrows and becomes a flat bush track that follows the base of the cliffs. The surrounding trees become quite dense again, adding quite an ambience to the area. The walk heads along the bottom of the Narrow Neck escarpment, until coming to an intersection with a set of stairs off to the right, signposted as the 'Golden Staircase'.

3.76 | Alternate Route Golden Stairs Track carpark to Bot

(640 m 27 mins) Continue straight: From the Golden Stairs car park and information sign on Glenraphael Dr, the walk follows the 'Golden Stairs / To Federal Pass' sign along the narrow track. The track leads gently downhill past the black and yellow 'Warning - Sections of the Golden Stairs are unfenced and can be slippery when wet' sign, with the occasional glimpse out to Malaita Point and towards the Three Sisters. The walk soon heads down a few steep eroded sections of track and passes through a couple of switchbacks. The track then leads to a fenced rock platform signposted as 'Botting's L.O.'.

Turn right: From the lower side of Botting's Lookout, this walk heads downhill along the eroded track. The walk follows the steps through a narrow gully then turns right to flatten out and head under a small overhang between the cliff and fence (passing a 'Caution Rockfall Hazard' sign). After about 100m of fence, the track turns right to cross a wide gully. On the other side of the gully, this walk climbs down a series of metal and stone staircases. The walk flattens again before heading down another series of stairs. Finally, the track winds down the wide spur to meet the signposted T-intersection with 'Federal Pass'. Now Turn right to join the main walk.

3.76 | Bottom of Golden Staircase

(2.3 km 51 mins) Continue straight: From the intersection, this walk follows the 'Federal Pass - Ruined Castle' sign along the flat wide track, keeping the valley to your left. This track follows the old horse-drawn coal tram route. The track leads through a tall rainforest filled with fern trees and vines, with the occasional lyrebird. After about 1.3km the forest opens up, letting in more light and exposing some distant filtered views. After wandering through the more open forest for about 250m, the track passes a small campsite (on the right). This walk continues for another 700m along the main track through the bracken fern forest to find a larger campsite (just up to the right) with a short stone wall on one side).

6.02 | Miners Campsite

This flat campsite beside the Federal Pass walking track about 2.2km south of the intersection at the bottom of the Golden Stairs. There is short constructed stone wall left over from when there area was habited by miners. The campsite is surrounded by a tall forest, bracken ferns and some nice fern trees. There is no water or facilities.

6.02 | Miners Campsite

(300 m 7 mins) Continue straight: From the miners campsite, this walk follows the clear track south-west, keeping the valley to your left. The mostly flat track narrows a bit as it leads past a large flat area (on your right) after about 140m, then past a smaller campsite a short distance later. The track then winds through the forest for another 100m to come to a clearing and signposted three-way intersection, where there is a 'Federal Pass - Katoomba' sign pointing back along the track. (There is a campsite a few metres further on and to the left.)

6.32 | Northern Ruined Castle campsite

A short distance south east of the intersection with the Federal Pass and the northern access track to the Ruined Castle, is a fairly large basic campsite. There are two main flat areas for camping, both with fire scares. The area is surround with tall trees and ferns. There is no water nor any other facilities.

6.32 | Optional sidetrip to Ruined Castle

(730 m 20 mins) Turn right: From the intersection, this walk follows the 'Ruined Castle' sign uphill along the eroded track and soon passes the yellow 'Warning - Remote area indistinct route steep terrain - Exposed climbing loose surfaces - No reliable water Carry plenty Sterilise any water found on route' sign. The track winds up the wide valley getting steeper as it goes, climbing up onto the main ridgeline. Here the walk turns left (away from the view of Castle Head) and follows the rocky track more gently uphill for about 220m to pass under the side of a large boulder. The track continues along the narrow ridge for about 280m, with some filtered views past another large boulder to the base of the tall Ruined Castle summit. Here the walk heads gently down a bit (keeping the rock wall to your left), past a crevice, then follows the main track to the other (southern) side of the summit. The track then heads up again to find a number of rocky pinnacles. At the end of this side trip, retrace your steps back to the main walk then Turn right.

6.32 | The Ruined Castle

A formation jutting out of the Jamison Valley, the Ruined Castle has great views of the Jamison Valley from Katoomba to Leura. It is also possible to see Mt Solitary to the south-east.

6.32 | Northern Ruined Castle campsite

(550 m 12 mins) Continue straight: From the intersection, this walk follows the 'Mount Solitary' sign past the campsite (on your left) and past the 'Warning - Remote area indistinct route steep terrain - Exposed climbing loose surfaces - No reliable water Carry plenty Sterilise any water found on route' sign. This walk continues along the mostly flat track, passing through a tall turpentine forest for about 450m where you come into view of a campsite (down to your left). The walk continues a short distance further, coming to an intersection where there is a fair amount of coal on the ground, a campsite down to your left and the entrance to an old small coal mine (behind a rock) on your right.

6.88 | Ruined Castle mine campsite

This campsite is almost due east of Ruined Castle, just off the track that leads around the base of hill. The campsite is down a short but steep bank near the site of an old mine. There are a few campsites scattered along the flat area, mostly surrounded by some tall stringy barks. There are a few fire scars and some filtered valley views. A pleasant spot to stay. There was once a water spring nearby, but this is no longer reliable, you will need to carry in your own water.

6.88 | Ruined Castle mine campsite

(380 m 11 mins) Continue straight: From the intersection, this walk follow the main track south-east, initially keeping the campsite and valley to your

left. The track initially heads down a short rocky section then flattens out to pass a large square boulder after about 100m. The track continues through ferny forest for just over 200m, then passes another campsite (down a steep hill to your left), and about 30m further on, comes to a signposted intersection where a 'Katoomba' arrow points back along the track.

7.26 | Intersection South of Ruined Castle

(1.3 km 35 mins) Continue straight: From the intersection, this walk follows the 'Mount Solitary' sign gently downhill along the fairly narrow track, keeping the main valley to your left. After about 300m, the more eroded and rocky track begins to climb the ridge and after climbing for just shy of 300m, the track flattens out and passes a couple of small clearings - the second clearing is just past where the track leads downhill. Just after the second clearing (used as a campsite), the track begins to climb up the ridge again. This track climbs up a few rocky eroded section and soon comes to the base of a tall series of rockwalls - the Korrowall Knife-edge.

8.59 | Bottom of Korrowall Knife-edge

(650 m 31 mins) Continue straight: From the base of the rocks, this walk starts the arduous climb up the Korrowall Knife-edge. Ascending the Korrowall Knife-edge is a hard climb, vertical in places and much of the climbing will involve both hands - some people use ropes to help lift heavy packs. This walk initially heads around to the left of the first boulder to head up through the eroded steep valley between the rocks. The walk continues to scramble up the side of the rocks, then climbs vertically up a crack in the rock to a small flat area, offering the first distant view for this climb. The walk continues by climbing up a 3m rock wall, then up the eroded track before climbing up through the obvious gap in the next rock wall. At the top of this climb is another great view and a short distance further up, this faint track passes a rock with a hole/cave (on your right). From here, the walk follows the worn track up through a couple more rock gullies, still generally keeping the rock wall to your right (and passing a couple of arrows). This brings the walk to an exposed flat area, with red dirt and fantastic views. The walk continues by climbing up through the next eroded gully to the top of the Korrowall Knife-edge, where there is a large rock wall on your left.

Continue straight: From the top of Korrowall Knife-edge, this walk heads south following a worn track that initially heads steeply down beside the large rock wall (keeping the wall to your left). The track passes a small cave at the base of this cliff then climbs up beside the cliff to the top of the ridge, past the rocks to find a view to the left. Here the faint track veers right to follow along the base of another cliff. The walk then heads up a short but steep climb, where a short flat walk leads to a fantastic view on your right, looking over Cedar Creek valley to Narrow Neck. After following this faint track a further 60m south along the base of another cliff, this walk then climbs up the middle of a steep gully - just past the top of this climb, the track bends sharp left and leads up the hill for about 50m to enter a lovely she oak forest, a clearing and the Corowal Plateau campsite.

9.24 | Corowal Plateau campsite

The Corowal Plateau campsite is an informal campsite at the north eastern end of Mount Solitary. The clearing is set among some pleasant casurina forest. There are a few campfire scares, although this is in a fuel stove only area. There is plenty of flat area but there is no water source or any other facilities.

9.24 | Corowal Plateau campsite

(820 m 19 mins) Veer right: From the campsite, this walk heads south-east, following the mostly flat track along the top of the ridge through the she oak forest. After about 200m, this walk enters a banksia forest, and continues along the flat ridge (past a few impromptu campsites) for about 400m, where the track begins to head downhill. The track winds downhill for about 170m

(passing a track on your left) and comes to a large flat saddle and clearing with a large rock wall, Chinamans Gully Campsite.

10.06 | Chinamans Gully Campsite

Next to a small creek (often dry) and sheltered from the winds, this campsite is great for those wanting to camp on Mt Solitary. For daywalkers, this spot offers the chance to rest under the overhangs of the cliffs before continuing. Water here is not reliable, please note that in the past water was more reliable, but not so now. Please carry plenty of water. There is a camping area near the beginning of the track and there are also a few spots along the gully where people have camped previously.

10.06 | Optional sidetrip to Chinamans Gully view

(390 m 8 mins) Turn left : From Chinamans Gully campsite, this walk follows the track north, keeping the rock walls to your right. The track soon starts to head gently downhill, keeping the small gully on your left and passing through a number of sandstone camping caves. The track then heads left to follow the gully downhill for about 150m, and comes to a small clearing and campsite at the junction of two creeks. The track then crosses the side creek and heads gently up the side of the hill, coming to an unfenced filtered view up the Kedumba Valley to Katoomba. At the end of this side trip, retrace your steps back to the main walk then Turn left.

10.06 | Optional sidetrip to Campsite View

(60 m 2 mins) Turn sharp right: From Chinamans Gully campsite, this walk follows a faint track south, keeping the main rock wall immediately to your left. The track soon bends right and heads up onto a rock platform, suddenly coming to the top of an unfenced cliff with stunning views south. This point is sometimes called 'Melvilles Lookout', but there is some debate as the name appears in different places on different maps. At the end of this side trip, retrace your steps back to the main walk then Turn right.

10.06 | End of day 1

This is the planned overnight stay for the end of day 1, happy camping.

10.06 | Chinamans Gully campsite

(1.8 km 55 mins) Continue straight: From the large campsite at the top of Chinamans Gully, this walk heads east up the gully, initially keeping the large main rock to your right (and Chinamans Gully to your left). The track leads up the short gully to the top of the rock, where there is a filtered view (to your right). This walk follows the track as it winds up the hill for about 130m, passing another great view (on your right). The track then mostly flattens out, following the top of the ridge for another 500m to pass a small campsite. About 200m past this campsite, the track then passes a short track (on your left that provides great unfenced views over the Kedumba Valley). Over the next 400m, the track continues east, fairly closely to the northern face of Mount Solitary, with the occasional gap in the trees to provide great views. The track alternately rises and falls, and passes the (not very noteworthy) summit of Mount Solitary. From here, the track starts to lead down a ridge, passing a few filtered views over about 500m, then comes to a large campsite, with a rock platform (up to the left) that provides even more views.

11.87 | Singa-Jingawell Creek Campsite

Singa-Jingawell Creek Campsite is near the northern wall, partway across the eastern half of Mount Solitary. The informal campsite sits in a pleasant little depression beside the small, usually dry creek. There is a rock platform at the top of the campsite that provides great views up the Kedumba River towards Katoomba. There is a large fire scare, but this is in a fuel stove only area, so please avoid lighting any campfires. The creek gets a small amount of water in it after rain, but it does not last long, so always best to bring your own.

11.87 | Singa-Jingawell Creek Campsite

(1.2 km 29 mins) Continue straight: From Singa-Jingawell Creek Campsite, this walk heads south-east, initially keeping the rock wall to your left. After about 80m, this walk stays left (ignoring the track that crosses the creek). Here the track climbs the fairly short hill then follows the ridgeline for just over 100m to climb up the gully beside the large rock formation, then climbs up a rock wall (about 2-3m tall). There are some views (to the right) over Singa-Jingawell Creek valley. The rocky track continues east for about 500m and then turns right, coming to a small ridgetop campsite just over 100m later. Shortly after this campsite (just before a large rocky outcrop), the walk turns left and starts to lead down the ridgeline, quite steeply in places, for about 250m and finds an intersection in a saddle, with a steep gully on your left and a short climb to a rocky viewpoint (and logbook) straight ahead.

13.05 | Solitary Pass

(1.2 km 40 mins) Turn left : From the saddle, this walk follows the eroded track very steeply down the gully to the north. The track soon bends right around the base of the cliff to find the ridge. The walk follows the steep eroded track down the ridge for about 300m to where the track flattens out for a short time, then turns left to wind down through the casuarina forest. The track winds down through this casuarina forest, very steeply and slippery in places for about 800m, (turning right at the faint track intersection partway down) heading east to a flat area, campsite and signposted intersection, where a 'Mount Solitary' sign points back up the hill.

14.25 | Int of Kedumba Camping and Solitary Tracks

(1.4 km 31 mins) Continue straight: From the intersection and campsite, this walk follows the 'Kedumba Pass' and 'Kedumba River' signs west, gently downhill along the ridge. After about 600m, just after passing between some boulders, the track starts to steepen and leads down towards the views of the cliff (on the far side of the valley), then mostly flattens out again. This track then steeply descends again, until the track bends right and comes to a beach on the south (western) side of the Kedumba River. Here the walk crosses the

river (usually lower-shin deep, this river has a large catchment and may be impassable after rain). Once on the other side, this walk comes to a rocky beach and climbs over a large fallen tree to see the main track continuing ahead and a little to the left (sometimes marked with a cairn). There is a place that has been used as a campsite a short distance upstream (not safe if there is a chance of the river rising), or there are a few alternative places to camp up the embankment.

15.65 | Kedumba River Campsite

This campsite is next to the Kedumba River, along the Mount Solitary walking track. This is a large clearing and basic campsite. Open fires are not permitted so it is necessary to take a fuel stove. There is normally plenty of water in the creek, but it should be treated for drinking. There are no facilities.

15.65 | Kedumba River

(2.2 km 1 hr 8 mins) Continue straight: From the Kedumba River crossing, this walk follows the track (sometimes marked with a rock cairn) north, up the embankment and away from the river. The track soon bends left and leads around the side of the flat area with a nice blue gum stand. The track then starts to climb, steeply at first, for about 400m (passing some views back to the cliffs of Mount Solitary) before flattening out. The track then leads gently up through the open forest for about 800m, where it then leads gently down to cross a small gully. The track continues up the main ridge for another 400m then along the side of a narrow steep gully (on your left). Near the top of this gully, the track turns left to cross the now small gully. The track now leads north for a little while around the ridge and climbs the hill for another 500m, passing through a ferny forest, to find a yellow 'warning' sign. From this sign, the track leads left and up the bank, coming to an intersection with the Sublime Point management trail, where a 'Mount Solitary' sign points back along the track.

17.84 | Int of Sublime Point trail and Kedumba Valley Rd

(3.1 km 1 hr 5 mins) Turn left: From the intersection, this walk follows the 'Leura' sign downhill along the wide management trail. The trail soon crosses a concrete ford then leads up a short hill. The trail then winds down through the tall wooded forest for about 1km to cross a culverted creek. The steeper sections of this trail have been concreted. The trail continues to wind downhill for another 500m, to some good views (left) to the cliffs of Mount Solitary. Over the following 600m, the trail passes through some sharp bends, then heads along the side of a steep gully (on your left). As the trail continues down, it crosses a saddle, after which it has a steep gully on the right. The trail then leads down the side of this gully to pass a small clearing (used as a campsite), and come to a 'Jamison Creek' sign, just before the creek.

20.99 | Jamison Creek campsite

There is a small clearing beside the management trail about 60m north east of the Jamison Creek crossing. There are no facilities and water from the creek must be treated well before use. The area is surrounded by a tall wooded forest with dense undergrowth.

20.99 | Jamison Creek Crossing

(3.9 km 1 hr 36 mins) Continue straight: From the Jamison Creek sign, this walk crosses Jamison Creek on the concrete ford (usually ankle deep). Warning - this river may be impassable after rain, depth indicators are present. On the other side, the trail bends right and leads uphill for just over 1km to come to a flat open saddle with great views over the valley to the Three Sisters and also much of the surrounding escarpment. From here, this walk continues along the trail as it winds generally downhill for almost 3km, with the steeper sections concreted. As the trail approaches Leura Falls Creek crossing, it winds down into a deep cool gully, passing through several sharp

bends. Just before the creek, there is a clearing and campsite (on your left), then the trail comes to a 'Leura Creek - Dont drink water' sign, just before the concrete ford.

24.9 | Leura Falls Creek Crossing

Just on the eastern side of Leura Creek is a fairly large clearing near the tight bend in the management trail. This informal campsite is set along the tall wooded forest and has close access to 'Leura Creek', a pleasant spot to cool off on a hot day. The creek flows from near the old sewage treatment plant and also has run off from townships, so treat the water well before use. This informal campsite is still just inside the Blue Mountains National Park boundary.

24.9 | End of day 2

This is the planned overnight stay for the end of day 2, happy camping.

24.9 | Leura Falls Creek Crossing

(4.2 km 1 hr 52 mins) Continue straight: From the sign, this walk heads down and crosses Leura Falls Creek on the concrete ford (usually ankle deep). Warning - this creek may be impassable after rain, depth indicators are present. The trail then winds uphill steeply at first and after about 1km, the trail comes to a particularly wide section (with 'special area' signs, pointing back) with good views up to the Three Sisters. This walk continues along the trail as it starts to head fairly consistently uphill again for another 1.5km, until mostly flattening out just past the large square boulder. Here, the trail bends right (ignoring the faint track on your left) and gently undulates along the side of the hill for about 300m to pass below the Three Sisters (visible up to your left). After another 300m, the trail crosses a concrete ford, then just over 100m later, passes another narrow track (on your left). Continuing along the trail for another 600m, this walk comes to the edge of a large clearing with great views up to the surrounding cliffs. Here the walk heads around the revegetating site of the sewage treatment plant, following the now grassy trail up to the left, to a flat area with a campfire scar (just before the trail leads into the dense fern forest).

29.13 | Old South Katoomba STP site

This area, currently under rehabilitation, is the site of the old South Katoomba sewage treatment plant (STP). This and other nearby STP's were decommissioned in the mid 1990's. The clearing provides great views of Leura's escarpment to the north and is surrounded by a dense forest with fern trees. This site is managed by Sydney Catchment Authority, and is outside the boundaries of the Blue Mountains National Park. This area is used occasionally as a campsite, and there are a couple of campfire scars. There are a few creek along the track north west of the clearing, but any water in the area should be treated well before use.

29.13 | Old STP site

(550 m 16 mins) Continue straight: From the top of the old STP site, this walk follows the old trail uphill and into the dense fern forest. The old trail narrows to a track as it winds up through the moist forest and after about 240m, this walk bends right and crosses a small gully (ignoring the track up to the left just before the gully). The track then bends left and passes a metal vent post (on your right) under a fallen tree, then continues uphill for about 200m where the track leads across a small creek (just downstream of an old timber bridge). The track continues up the side of the hill for about 20m, passing a couple of concrete pipe maintenance holes to come to a large concrete maintenance point (in view of some small falls to your right). Here the walk turns very sharply left, stepping up a short way. This walk follows the track around the side of the hill for about 60m to come to a signposted intersection with the 'Federal Pass' just in front of a small waterfall.

29.68 | Lower Linda Creek Falls

(300 m 10 mins) Turn left: From the intersection, this walk crosses Linda Creek just below a pleasant cascade using the foot bridge with a handrail. This walk then continues along the bush track that winds along the valley floor, to the signposted 'Leura Forest'. From here, the walk continues along the wide bush track, passing a few picnic tables, and winding through the forest to an open area with a large gazebo and an information sign at the intersection of the Federal Pass and the Dardenelles tracks.

29.98 | Leura Forest

Leura Forest is a great picnic area in the Jamison Valley at the junction of the Federal Pass and Dardenelles Tracks. This place was home to a popular tea house (also known as 'Lady Carrington Dining Hall') from the late 1800's. Today walkers can still enjoy the historic rotunda and the foundations of the original tea house. The picnic area provides a great rest spot under the shade

of the lilli pilli and coachwood forest.

29.98 | Leura Forest (Int of Federal Pass and Dardenelles)

(870 m 27 mins) Turn right: From the pergola at Leura Forest, this walk follows the 'Dardenelles Track' sign (the sign is up the hill behind the pergola) which heads up the stairs towards the cliff face, before turning left behind Leura Forest. The walk then leaves the shade of the forest, along a track with many fallen logs, until coming to the base of the Giant Staircase (signposted).

30.85 | Bottom of Giant Staircase

(240 m 23 mins) Turn right: From the intersection, the walk follows the sign up the 'Giant Staircase'. This climbs steeply (with handrails) until coming to an intersection with a bridge that goes across to the First of the three Sisters. Along the way, there are chairs in which to rest from the climb and enjoy the magnificent views of the valley.

Veer right: From the bridge, the walk heads up the staircase steeply to the top. The stairs have handrails and climb up the side of the cliffs to the intersection with the Lady Game Lookout track.

31.09 | Top of the Giant Staircase

(40 m 2 mins) Turn right: From the intersection, the walk follows the footpath up and away from the lookout, passing under a rock archway and continuing up the gentle hill to the intersection with the Cliff Drive access track.

Continue straight: From the intersection, this walk heads up the stone/concrete steps on the main path to almost immediately find an unnamed, fenced lookout platform (on the left).

31.13 | Oreades Lookout

(110 m 3 mins) Continue straight: From Oreades Lookout, this walk heads uphill along the path for about 30m to pass a stone seat (on the right), in a small sandstone overhang. Check the miniature cicada sculptures above the overhang. From here the walk leads moderately steeply uphill along the smooth concrete path for about 90m, to come to a clear intersection marked with a large 'Three Sisters Walk' sign. On the left is a small flat loose gravel area with two seats.

31.24 | Int of Prince Henry Cliff Track and the Three Sistr

(300 m 7 mins) Continue straight: From the intersection, this walk follows the large 'Echo Point' sign uphill along the smooth concrete path. The path leads uphill for about 45m to find a sandstone seat (on the right). From here the path continues winding gently uphill for another 70m to pass another sandstone seat (on the right). From this seat the path continues gently uphill for another 60m past yet another similar stone seat (on the right), this seat has a blue tongue lizard sculpture. After another 15m this walk comes to a clear signposted Y-intersection.

Continue straight: From the intersection, this walk follows the 'Katoomba & Echo point' arrow uphill along the concrete path, initially keeping the metal fence to the left. The path leads uphill for about 80m then over a rise to head downhill for short distance to an intersection with a track (on the left) just before the stone archway near Echo Point.

31.54 | Echo Point Archway Intersection

(30 m 1 mins) Continue straight: From the interestction, this walk heads past the 'Blue Mountains National Park' sign and under the stone archway. Here the walk veers left passing the toilet block to find the front of the visitor center (on the left) and an accessible car parking area (on the right).

31.57 | Echo Point Information Centre

This modern building at Echo Point is a great source of information. It is open daily from 9am-5pm (except Christmas Day). There is a large range of

books, maps and information about the area (and ice creams). There are toilets opposite the entrance, and mobility parking opposite. For more information, phone 1300 653 408. [More info.](#)

31.57 | Echo Point Information Center

(90 m 4 mins) Continue straight: From the front of the Echo Point Visitor Center and mobility car parking area, this walk heads downhill following the 'Echo point' sign across the wide open concrete area. After about 30m the walk leads past a large concrete seat (on the left) then passes a similar seat after another 20m. Continue gently downhill towards the view for another 30m to the stunning views at the formal Echo Point lookout.

31.65 | Echo Point

Echo Point is the Blue Mountains' most famous and popular lookout, home to one of the best photo opportunities for the Three Sisters. Visited by over two million tourists each year, this popular spot also serves as the starting point for many great walks in the area. The lookout is well fenced, has information signs and stunning views across the valley to the Three Sisters and Mount Solitary. There are mounted binoculars and seats nearby.

31.65 | Echo Point

(480 m 18 mins) Turn right: From the main lookout area at Echo Point, this walk heads across the concrete, keeping the view to the left, and then follows the concrete ramp down the gentle hill to the intersection of the Queen Elizabeth Lookout path.

Veer right: From the intersection, the walk follows the footpath heading away from Echo Point, winding through the bush for a short while until coming to the Kedumba View at the information sign, near the end of the footpath.

Turn right: From the Kedumba View, the walk heads off the footpath and follows the bush track, keeping the valley to the left while winding through the bush and along the side of the hill, climbing up to the 'Lady Darley Lookout'.

32.14 | Lady Darley Lookout

Lady Darley Lookout is a moderately-sized, fenced lookout, found on the Prince Henry Cliff Track. The lookout can also be accessed directly by a track from Panorama Drive. There is an information sign describing the view and the traditional naming of the natural features. The panoramic views from the lookout are great, from Kings Tableland on the left to Mount Solitary, Narrow Neck and parts of Scenic World on the far right.

32.14 | Lady Darley Lookout

(140 m 4 mins) Veer left: From Lady Darley Lookout, the walk heads down the metal staircase to the bush track, which it follows down the long set of wooden steps to the bottom, then continues through the bush until it climbs up a few more wooden steps to the Allambie Lookout.

32.28 | Allambie Lookout

Allambie Lookout is a small, fenced lookout on the side of the Prince Henry Cliff Track. The lookout provides an opportunity to enjoy the valley view and the sights of the Three Sisters, Kings Tablelands and Mount Solitary.

32.28 | Allambie Lookout

(100 m 3 mins) Continue straight: With the lookout and the valley to the left, the walk follows the bush track, winding along the side of the hill with the cliff's edge visible (down the hill to the left), as the track passes through a patch of tall gum trees and winds up some concrete steps, continuing along through thick scrub to Wollumai Lookout.

32.38 | Wollumai Lookout

Wollumai Lookout is a small, fenced lookout on the side of the Prince Henry

Cliff Track. The lookout is on a sandstone platform at the base of a cliff, and looks over a much larger drop into the Jamison Valley. There is a bench seat to enjoy the views over the valley, including Mount Solitary, Narrow Neck and glimpses of the Three Sisters.

32.38 | Wollumai Lookout

(240 m 8 mins) Continue straight: Keeping the lookout and the valley to the left, the walk follows the bush track through the scrub and across the short wooden walkway, winding past a wooden picnic bench, and continues through the dense scrub until it drops down some wooden steps and comes to Cliff View Lookout.

32.61 | Cliff View Lookout

This large, fenced wheelchair accessible lookout provides great mountain views of Mt Solitary, Kedumba Valley, Narrow Neck and across to Scenic World. There's a bench seat at the back of the lookout to enjoy the views from. The lookout fence is 1.2m high, the platform is 7.8x5.5m wide.

32.61 | Cliff View Lookout

(280 m 7 mins) Turn right: From the lookout, this walk follows the concrete path gently up and over a rise keeping the fence and the valley on the left. This walk continues for about 40m to come to a 3-way intersection with the 'Skyway East Station' staircase (on the right).

Continue straight: From the intersection, this walk follows the stenciled concrete path gently downhill, keeping the view and handrailing to your left. After about 90m this walk flattens and comes to a second handrail (on the right) at the start of a slightly steeper uphill section. After about 45m this walk flattens a bit and continues to meander along following the path gently downhill for about 120m to come to 3-way intersection, marked by a signposted mobility parking bay beside Cliff Drive.

32.89 | Katoomba Falls Park

(130 m 3 mins) Turn left: From the intersection, this walk heads away from the 'Cliff View Lookout' sign, keeping the road on the right of the footpath. The path heads into open parkland, around the edge of the park and down the wooden steps to the bottom, where the walk comes to the Kedumba River crossing, just downstream of the Katoomba Cascades.

33.02 | Katoomba Cascades

Popular with locals and visitors alike, these picturesque cascades are on the Kedumba River. The cascades are nestled in the bend on Cliff Drive, near Katoomba Park. There are stepping stones across the creek at the bottom of the falls and a bench seat in the shade. There are a few small clearings where visitors can sit and enjoy the falls.

33.02 | Katoomba Cascades

(180 m 4 mins) Continue straight: From the cascades, this walk crosses the creek to the western side, where it passes a picnic bench. The track continues downstream, winding through the forest for a short while until climbing up a gentle hill to the Kedumba River lookout.

33.2 | Kedumba River lookout

This unnamed, fenced lookout is at the bend in the track along Kedumba River, at the top of Katoomba Falls. The lookout gives great views across the valley to Mount Solitary and Narrow Neck. There are also glimpses of the Katoomba Falls as it drops away, far into the valley below.

33.2 | Kedumba River lookout

(130 m 5 mins) Veer right: From the intersection at the lookout, the walk follows the bush track going up the hill, keeping the valley to the left. The track soon comes to the intersection with the Solitary lookout track.

Continue straight: From the intersection, this walk follows the hardened footpath, keeping the handrailing on the left as the path begins to wind uphill, climbing up some wooden steps to the top, where it comes to the large clearing at the intersection of the Reids Plateau track and the Katoomba Falls Round Walk.

33.33 | Int of Katoomba Kiosk Loop and Witches Leap Track

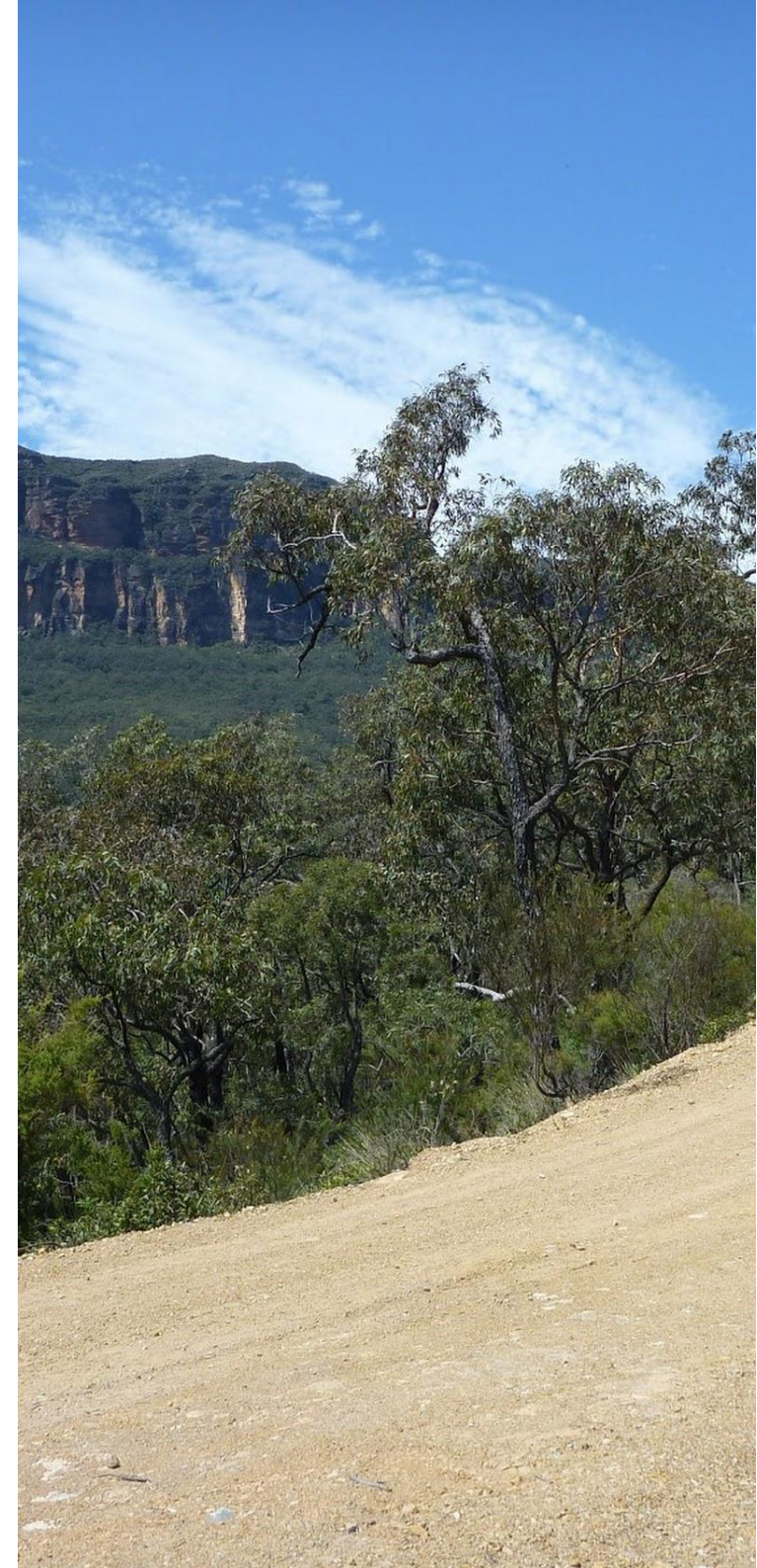
(30 m 1 mins) Turn right: With the Katoomba Falls track to the left and the picnic bench to the right, this walk heads north up the concrete stairs, passing a 'Greenspace Project' sign. The walk comes to the top of the stairs, to the signposted intersection of 'Round Walk' at the back of the small park near the Katoomba Kiosk.

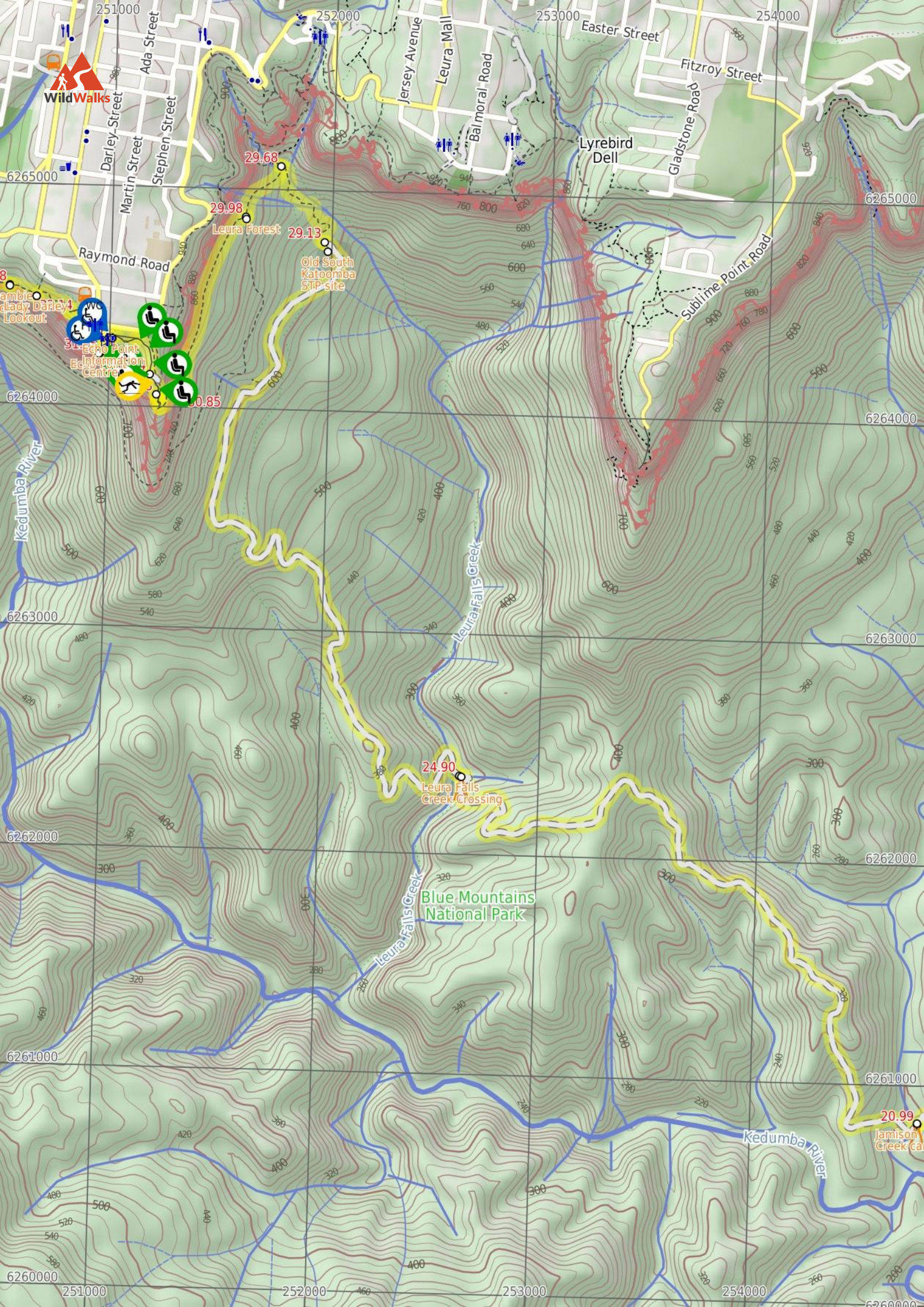
33.35 | Int of Katoomba Kiosk Track and Prince Henry Cliff

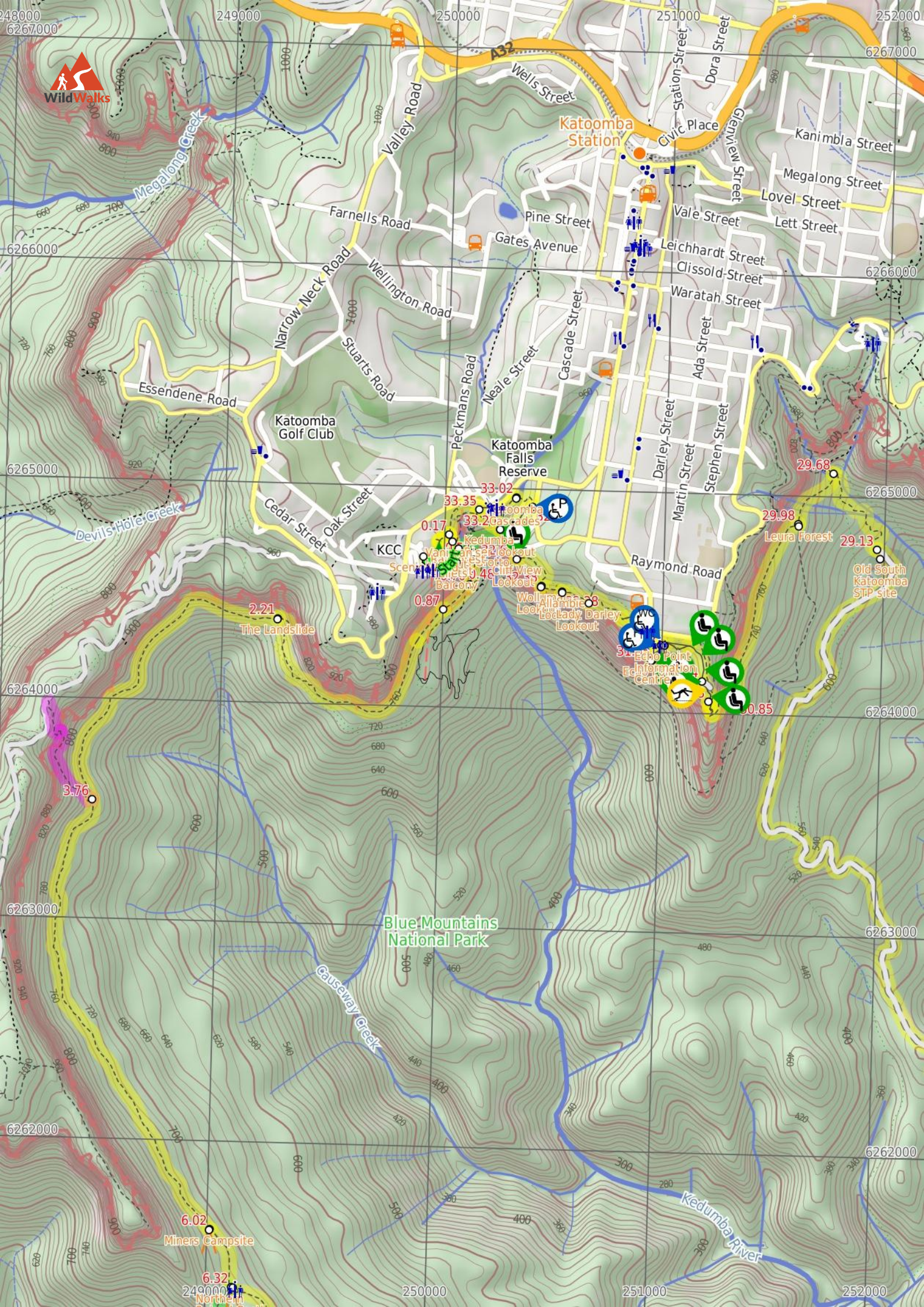
(430 m 9 mins) Veer left: From the intersection, the walk follows the 'Scenic Railway' sign along the hardened bush track, winding along the side of the hill as the track heads through the forest, to the signposted intersection of the Round Walk and the Prince Henry Cliff Walk.

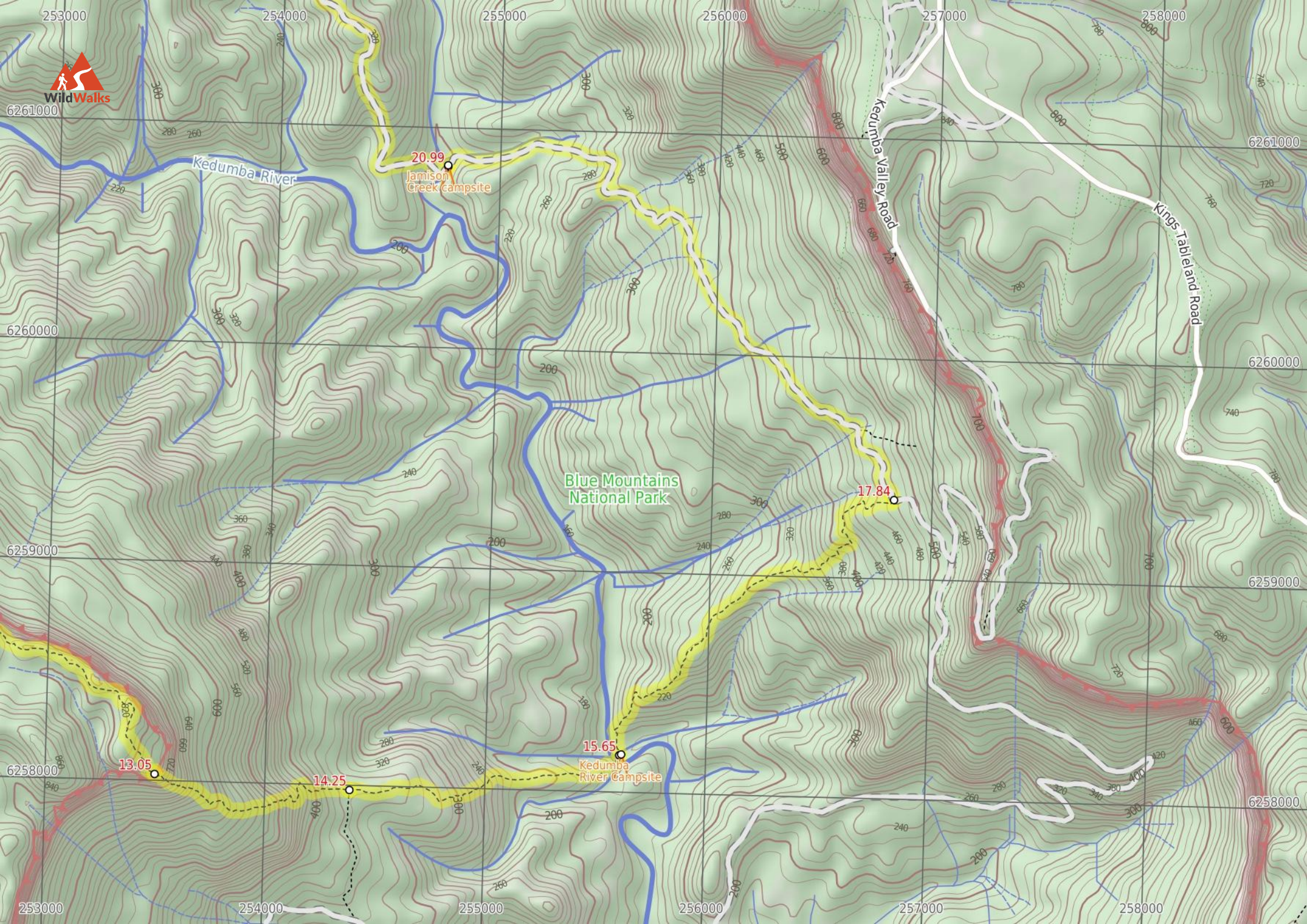
Veer right: From the intersection, this walk follows the only unsignposted bush track up the gentle hill. It winds up the wooden steps, bending around to the left until it flattens out at the intersection with the Scenic World footbridge.

Continue straight: From the intersection, this walk heads along the wooden footbridge that winds around the back of the Scenic World multi-story car park, to the concrete footpath. The walk continues around the main building, climbing up some concrete steps to the main entrance of Scenic World.









Kedumba River

20.99
Jamison
Creek Campsite

Blue Mountains
National Park

17.84

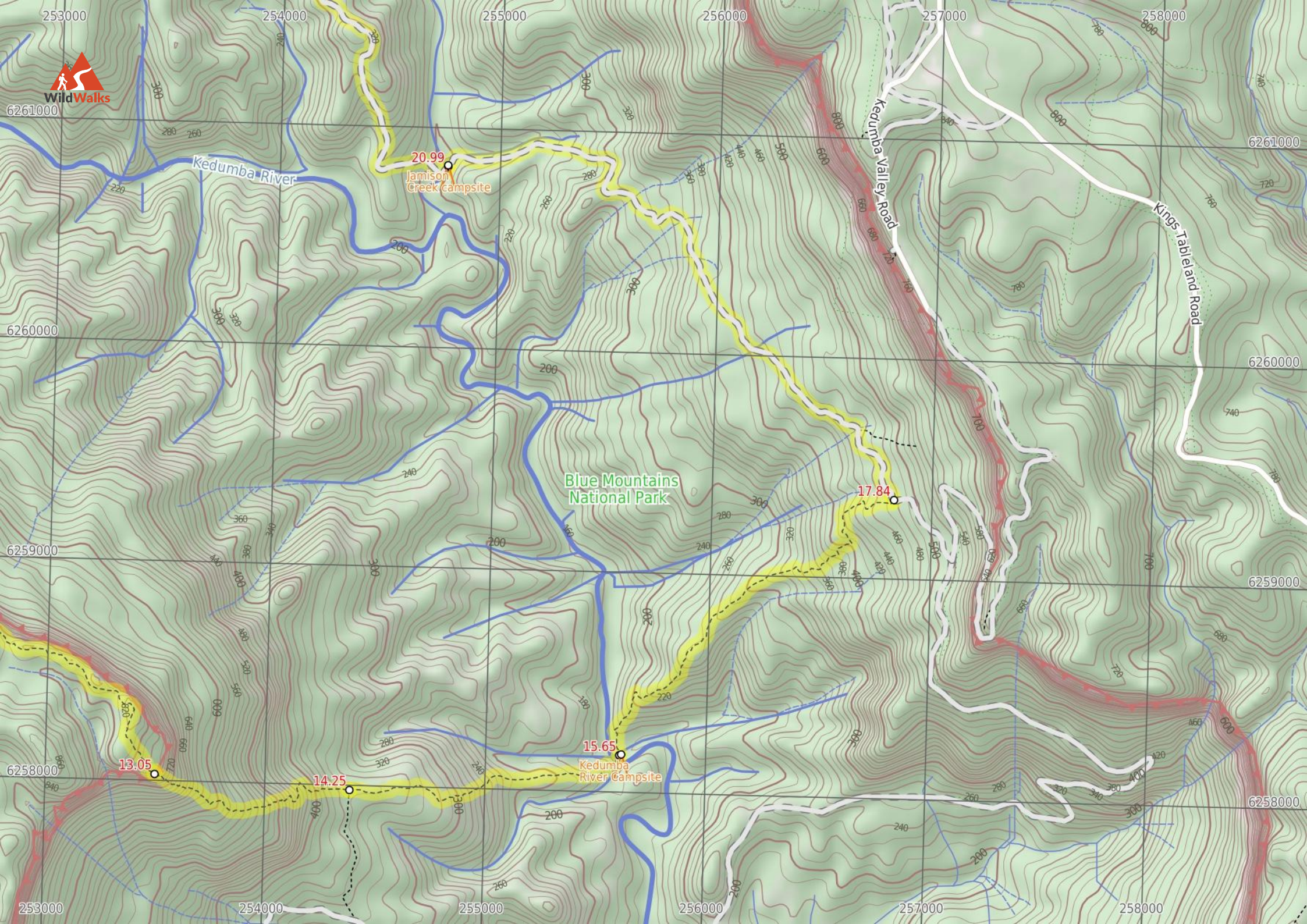
15.65
Kedumba
River Campsite

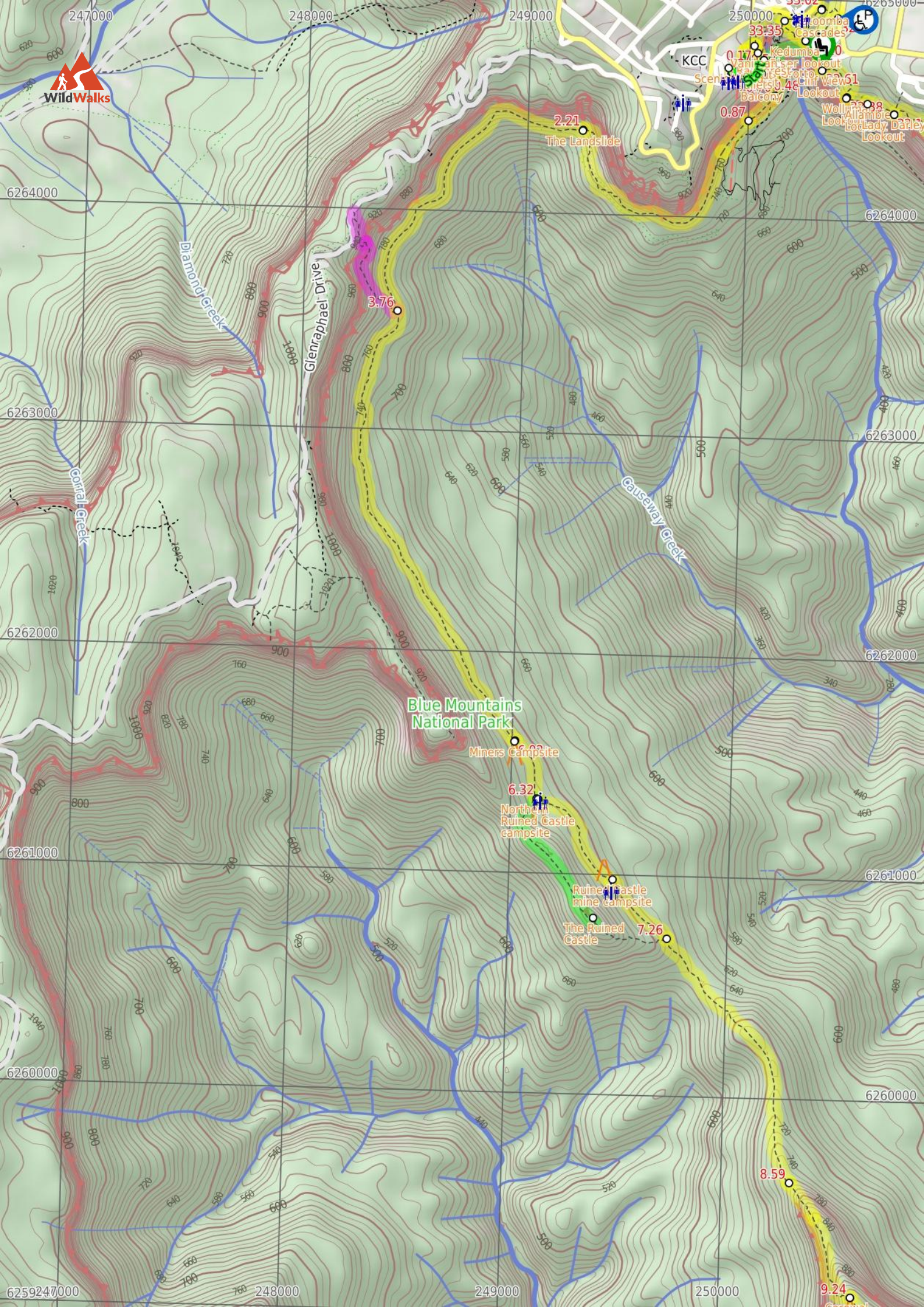
13.05

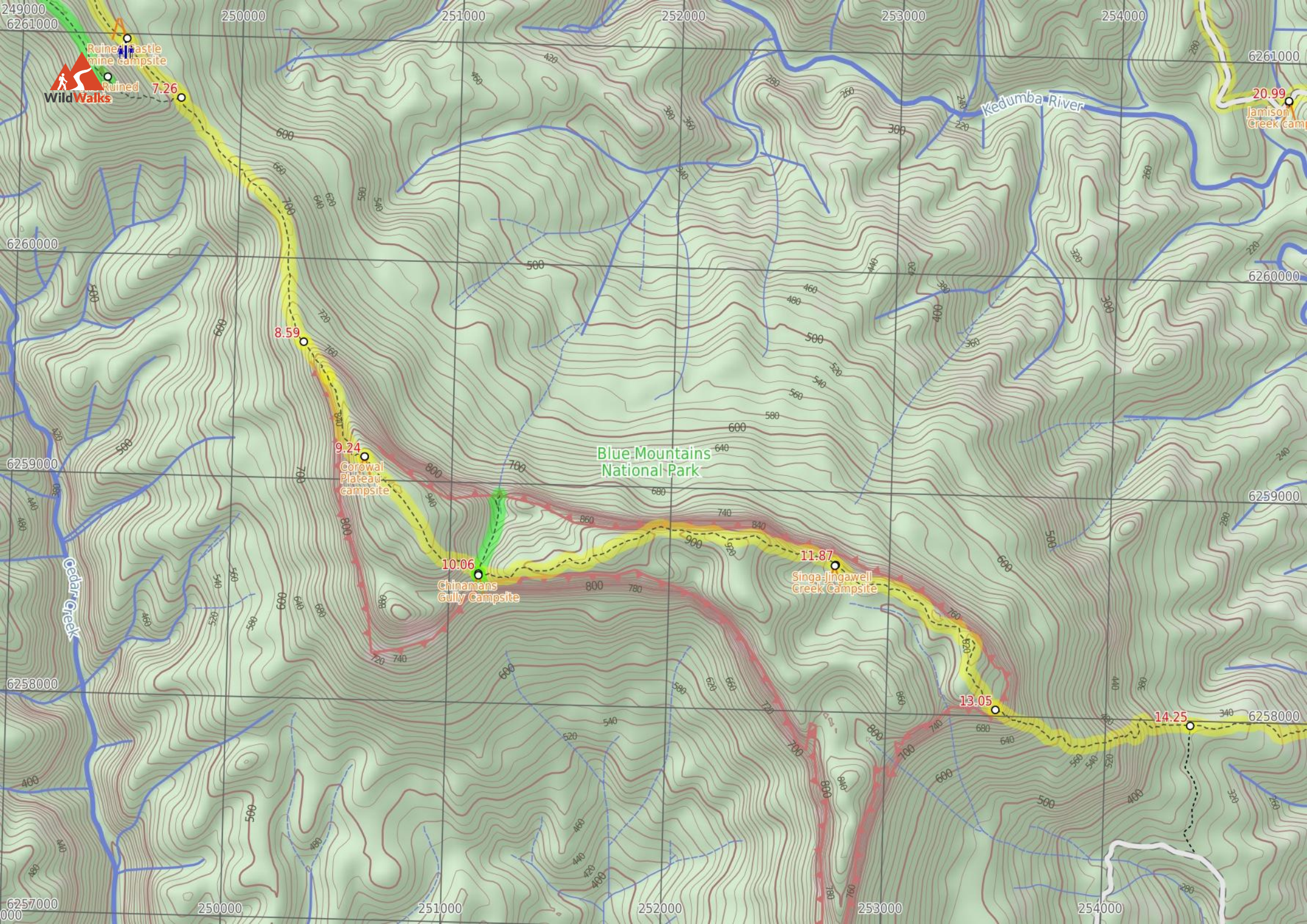
14.25

Kedumba Valley Road

Kings Tableland Road







Blue Mountains National Park

Kedumba River

Cedar Creek

Corawal Plateau campsite

Chinamans Gully Campsite

Singa-Jingawell Creek Campsite

Jamison Creek Camp

8.59

9.24

10.06

11.87

13.05

14.25

20.99

249000

250000

251000

252000

253000

254000

6261000

6260000

6260000

6259000

6259000

6258000

6258000

6257000

250000

251000

252000

253000

254000

Summary navigation sheet for the Mt Solitary and Kedumba Valley Circuit



km	From	Up/Dwn	Length	Initial directions (Use full tracknotes and maps for more detail)
Start	Scenic World -33.7286,150.301 (GR Katoomba, 499647)	5 -33	170 m 4 mins	From the Scenic World main entrance, this walk follows the 'Prince Henry Cliff Walk' signs down the concrete steps and around to the back of the building, where it comes to a wooden footbridge that curves around beh...
0.17	Int of Prince Henry Cliff Walk and Katoomba Falls Round Walk -33.7275,150.302 (GR Katoomba, 500648)	0 -16	40 m 1 mins	Turn right: From the intersection, this walk heads down the steep wooden steps, following the signs to the bottom of the Scenic Railway.
0.21	Vanimans Lookout -33.7278,150.3022 (GR Katoomba, 500648)	4 -11	110 m 3 mins	Turn right: From Vanimans Lookout, this walk follows the bush track heading away from the bottom of the wooden steps.
0.32	Int of Katoomba Falls Round Walk and Juliets Balcony Track -33.7287,150.3023 (GR Katoomba, 500647)	1 0	10 m	Optional sidetrip to Juliets Balcony. Veer right: From the intersection, this walk heads up the short set of wooden steps, winding up to the raised rock platform, and along the bush track to the edge of the fenced-off rock shelf.
0.32	Int of Katoomba Falls Round Walk and Juliets Balcony Track -33.7287,150.3023 (GR Katoomba, 500647)	3 -4	60 m 1 mins	Veer left: From the intersection, this walk follows the long set of wooden steps winding down the side of the hill.
0.38	Int of Katoomba Falls Round Walk and Furber Steps -33.7281,150.3024 (GR Katoomba, 501647)	0 -1	10 m	Turn right: From the intersection, this walk follows the 'Base of Scenic Railway' signpost down the wooden steps to the bottom, where it comes to the Rainforest Lookout.
0.39	Rainforest Lookout -33.7281,150.3025 (GR Katoomba, 501647)	1 0	20 m	Turn right: From the Rainforest Lookout, the track follows the bush track heading past the base of the wooden steps and then through the forest for a short while, until it reaches the signposted intersection of the ...
0.41	Int of Furber Steps and Katoomba Falls Lookout Track -33.7283,150.3025 (GR Katoomba, 501647)	1 -67	180 m 6 mins	Optional sidetrip to Katoomba Falls. Turn left : From the intersection, this walk follows the 'Underfalls Walk' sign down a short set of steps and across a small waterfall using the wooden bridge (This creek flows from Witches Leap all the way down to ...
0.41	Int of Furber Steps and Katoomba Falls Lookout Track -33.7283,150.3025 (GR Katoomba, 501647)	1 -1	30 m 1 mins	Continue straight: From the intersection, this walk follows the 'Scenic Railway' sign along the bush track, winding through the forest for a short while before passing a large rock overhang with a wooden bench seat ...
0.44	Queen Victoria Lookout -33.7285,150.3027 (GR Katoomba, 501647)	0 -1	10 m	Continue straight: From the intersection, this walk heads up the short metal staircase to the intersection of the Queen Victoria Lookout at the top.
0.45	Int of Furber Steps and Lynes Point Track -33.7285,150.3027 (GR Katoomba, 501647)	0 -7	30 m 1 mins	Turn right: From the intersection, this walk follows the bush track heading away from the short metal staircase, winding along the side of the hill to the top of some concrete steps where there is a 'Furber Steps' s...
0.48	Furber Lookout -33.7288,150.3028 (GR Katoomba, 501646)	17 -84	90 m 7 mins	Continue straight: From the Furber Lookout, this walk heads down the concrete steps that zigzags steeply down to the bottom of the cliffs.
0.57	Int of Furber Steps and Vera's Grotto Track -33.7284,150.3032 (GR Katoomba, 501647)	27 -3	30 m 3 mins	Optional sidetrip to Vera's Grotto. Continue straight: From the intersection, the walk follows the 'Vera's Grotto' sign along the bush track, winding down a set of wooden steps to Vera's Grotto Lookout at the bottom.
0.57	Int of Furber Steps and Veras Grotto Track -33.7284,150.3032 (GR Katoomba, 501647)	5 -75	130 m 6 mins	Turn right: From the intersection, this walk goes down the stairs.
0.70	Int of Furber Steps and Scenic Railway Track -33.7296,150.303 (GR Katoomba, 501646)	10 -15	170 m 4 mins	Turn right: From the bottom of Furber Steps, this walk follows the 'To base of scenic railway' sign keeping the handrail on the left, and following the flat bush track.
0.87	Scenic Railway (Bottom Platform) -33.7306,150.3017 (GR Katoomba, 500644)	175 -178	1.3 km 46 mins	Continue straight: From the bridge over the bottom of the Scenic Railway, this walk follows the signs to 'scenic walkway', passing a replica of a mining cart, as well as an old mine.

Summary navigation sheet for the Mt Solitary and Kedumba Valley Circuit



km	From	Up/Dwn	Length	Initial directions (Use full tracknotes and maps for more detail)
2.21	Landslide -33.731,150.2936 (GR Katoomba, 493644)	128 -123	1.6 km 42 mins	Continue straight: From the eastern side of the Landslide, the walk heads across the face of the landslide (keeping the cliff on the right).
3.76	Golden Stairs Track carpark -33.7343,150.2824 (GR Katoomba, 482640)	50 -257	640 m 27 mins	Alternate Route Golden Stairs Track carpark. Continue straight: From the Golden Stairs car park and information sign on Glenraphael Dr, the walk follows the 'Golden Stairs / To Federal Pass' sign along the narrow track.
3.76	Bottom of Golden Staircase -33.7384,150.2845 (GR Katoomba, 484635)	104 -129	2.3 km 51 mins	Continue straight: From the intersection, this walk follows the 'Federal Pass - Ruined Castle' sign along the flat wide track, keeping the valley to your left.
6.02	Miners Campsite -33.756,150.2903 (GR Jamison, 490616)	16 -11	300 m 7 mins	Continue straight: From the miners campsite, this walk follows the clear track south-west, keeping the valley to your left.
6.32	Northern Ruined Castle campsite -33.7584,150.2913 (GR Jamison, 491613)	82 -17	730 m 20 mins	Optional sidetrip to Ruined Castle. Turn right: From the intersection, this walk follows the 'Ruined Castle' sign uphill along the eroded track and soon passes the yellow 'Warning - Remote area indistinct route steep terrain - Exposed climbing loose s...
6.32	Northern Ruined Castle campsite -33.7584,150.2913 (GR Jamison, 491613)	12 -31	550 m 12 mins	Continue straight: From the intersection, this walk follows the 'Mount Solitary' sign past the campsite (on your left) and past the 'Warning - Remote area indistinct route steep terrain - Exposed climbing loose surf...
6.88	Ruined Castle mine campsite -33.7618,150.295 (GR Jamison, 495610)	10 -46	380 m 11 mins	Continue straight: From the intersection, this walk follow the main track south-east, initially keeping the campsite and valley to your left.
7.26	Intersection South of Ruined Castle -33.7641,150.2977 (GR Jamison, 497607)	132 -38	1.3 km 35 mins	Continue straight: From the intersection, this walk follows the 'Mount Solitary' sign gently downhill along the fairly narrow track, keeping the main valley to your left.
8.59	Bottom of Korrowall Knife-edge -33.7741,150.3037 (GR Jamison, 503596)	205 -17	650 m 31 mins	Continue straight: From the base of the rocks, this walk starts the arduous climb up the Korrowall Knife-edge.
9.24	Corowal Plateau campsite -33.7788,150.3067 (GR Jamison, 506591)	8 -120	820 m 19 mins	Veer right: From the campsite, this walk heads south-east, following the mostly flat track along the top of the ridge through the she oak forest.
10.06	Chinamans Gully campsite -33.7836,150.3123 (GR Jamison, 511586)	0 -50	390 m 8 mins	Optional sidetrip to Chinamans Gully view. Turn left : From Chinamans Gully campsite, this walk follows the track north, keeping the rock walls to you right.
10.06	Chinamans Gully campsite -33.7836,150.3123 (GR Jamison, 511586)	0 -14	60 m 2 mins	Optional sidetrip to Campsite View. Turn sharp right: From Chinamans Gully campsite, this walk follows a faint track south, keeping the main rock wall immediately to your left.
10.06	End of day 1 -33.7836,150.3123 (GR Jamison, 511586)	0 0	0 m	This is the planned overnight stay for the end of day 1, happy camping.
10.06	Chinamans Gully campsite -33.7836,150.3123 (GR Jamison, 511586)	179 -206	1.8 km 55 mins	Continue straight: From the large campsite at the top of Chinamans Gully, this walk heads east up the gully, initially keeping the large main rock to your right (and Chinamans Gully to your left).
11.87	Singa-Jingawell Creek Campsite -33.7833,150.3298 (GR Jamison, 528587)	61 -105	1.2 km 29 mins	Continue straight: From Singa-Jingawell Creek Campsite, this walk heads south-east, initially keeping the rock wall to your left.
13.05	Solitary Pass -33.7892,150.3376 (GR Jamison, 535580)	11 -428	1.2 km 40 mins	Turn left : From the saddle, this walk follows the eroded track very steeply down the gully to the north.
14.25	Int of Kedumba Camping and Solitary Tracks -33.7899,150.3472 (GR Jamison, 544580)	2 -206	1.4 km 31 mins	Continue straight: From the intersection and campsite, this walk follows the 'Kedumba Pass' and 'Kedumba River' signs west, gently downhill along the ridge.
15.65	Kedumba River -33.7884,150.3605 (GR Jamison, 556582)	345 -17	2.2 km 1 hr 8 mins	Continue straight: From the Kedumba River crossing, this walk follows the track (sometimes marked with a rock cairn) north, up the embankment and away from the river.

Summary navigation sheet for the Mt Solitary and Kedumba Valley Circuit



km	From	Up/Dwn	Length	Initial directions (Use full tracknotes and maps for more detail)
17.84	Int of Sublime Point trail and Kedumba Valley Rd -33.778,150.3739 (GR Jamison, 568594)	28 -311	3.1 km 1 hr 5 mins	Turn left: From the intersection, this walk follows the 'Leura' sign downhill along the wide management trail.
20.99	Jamison Creek Crossing -33.7643,150.3521 (GR Jamison, 548608)	275 -192	3.9 km 1 hr 36 mins	Continue straight: From the Jamison Creek sign, this walk crosses Jamison Creek on the concrete ford (usually ankle deep).
24.90	End of day 2 -33.75,150.3296 (GR Jamison, 526624)	0 0	0 m	This is the planned overnight stay for the end of day 2, happy camping.
24.90	Leura Falls Creek Crossing -33.75,150.3296 (GR Jamison, 526624)	438 -103	4.2 km 1 hr 52 mins	Continue straight: From the sign, this walk heads down and crosses Leura Falls Creek on the concrete ford (usually ankle deep).
29.13	Old STP site -33.7282,150.323 (GR Katoomba, 520648)	71 -4	550 m 16 mins	Continue straight: From the top of the old STP site, this walk follows the old trail uphill and into the dense fern forest.
29.68	Lower Linda Creek Falls -33.725,150.3209 (GR Katoomba, 518651)	50 -9	300 m 10 mins	Turn left: From the intersection, this walk crosses Linda Creek just below a pleasant cascade using the foot bridge with a handrail.
29.98	Leura Forest (Int of Federal Pass and Dardenelles Tracks) -33.7271,150.3192 (GR Katoomba, 516649)	108 -89	870 m 27 mins	Turn right: From the pergola at Leura Forest, this walk follows the 'Dardenelles Track' sign (the sign is up the hill behind the pergola) which heads up the stairs towards the cliff face, before turning left behind ...
30.85	Bottom of Giant Staircase -33.7343,150.3161 (GR Katoomba, 513641)	182 -20	240 m 23 mins	Turn right: From the intersection, the walk follows the sign up the 'Giant Staircase'.
31.09	Top of the Giant Staircase -33.7347,150.3148 (GR Katoomba, 512640)	21 0	40 m 2 mins	Turn right: From the intersection, the walk follows the footpath up and away from the lookout, passing under a rock archway and continuing up the gentle hill to the intersection with the Cliff Drive access track.
31.13	Oreades Lookout -33.7344,150.3147 (GR Katoomba, 512641)	18 -2	110 m 3 mins	Continue straight: From Oreades Lookout, this walk heads uphill along the path for about 30m to pass a stone seat (on the right), in a small sandstone overhang.
31.24	Int of Prince Henry Cliff Track and the Three Sisters Pathway -33.7336,150.3144 (GR Katoomba, 512641)	19 -8	300 m 7 mins	Continue straight: From the intersection, this walk follows the large 'Echo Point' sign uphill along the smooth concrete path.
31.54	Echo Point Archway Intersection -33.732,150.3127 (GR Katoomba, 510643)	1 0	30 m 1 mins	Continue straight: From the interestction, this walk heads past the 'Blue Mountains National Park' sign and under the stone archway.
31.57	Echo Point Information Center -33.7321,150.3124 (GR Katoomba, 510643)	3 -22	90 m 4 mins	Continue straight: From the front of the Echo Point Visitor Center and mobility car parking area, this walk heads downhill following the 'Echo point' sign across the wide open concrete area.
31.65	Echo Point -33.7327,150.312 (GR Katoomba, 510642)	54 -66	480 m 18 mins	Turn right: From the main lookout area at Echo Point, this walk heads across the concrete, keeping the view to the left, and then follows the concrete ramp down the gentle hill to the intersection of the Queen Eliza...
32.14	Lady Darley Lookout -33.7303,150.3089 (GR Katoomba, 507645)	11 -19	140 m 4 mins	Veer left: From Lady Darley Lookout, the walk heads down the metal staircase to the bush track, which it follows down the long set of wooden steps to the bottom, then continues through the bush until it climbs up a ...
32.28	Allambie Lookout -33.7299,150.3076 (GR Katoomba, 505645)	13 -10	100 m 3 mins	Continue straight: With the lookout and the valley to the left, the walk follows the bush track, winding along the side of the hill with the cliff's edge visible (down the hill to the left), as the track passes thro...
32.38	Wollumai Lookout -33.7296,150.3066 (GR Katoomba, 504646)	29 -25	240 m 8 mins	Continue straight: Keeping the lookout and the valley to the left, the walk follows the bush track through the scrub and across the short wooden walkway, winding past a wooden picnic bench, and continues through the...
32.61	Cliff View Lookout -33.7285,150.3054 (GR Katoomba, 503647)	28 -10	280 m 7 mins	Turn right: From the lookout, this walk follows the concrete path gently up and over a rise keeping the fence and the valley on the left.

Summary navigation sheet for the Mt Solitary and Kedumba Valley Circuit



km	From	Up/Dwn	Length	Initial directions (Use full tracknotes and maps for more detail)
32.89	Katoomba Falls Park -33.7264,150.3061 (GR Katoomba, 504649)	1 -18	130 m 3 mins	Turn left: From the intersection, this walk heads away from the 'Cliff View Lookout' sign, keeping the road on the right of the footpath.
33.02	Katoomba Cascades -33.726,150.3053 (GR Katoomba, 503650)	4 -22	180 m 4 mins	Continue straight: From the cascades, this walk crosses the creek to the western side, where it passes a picnic bench.
33.20	Kedumba River lookout -33.7273,150.3045 (GR Katoomba, 503648)	31 -4	130 m 5 mins	Veer right: From the intersection at the lookout, the walk follows the bush track going up the hill, keeping the valley to the left.
33.33	Int of Katoomba Kiosk Loop and Witches Leap Track -33.7267,150.3034 (GR Katoomba, 501649)	5 0	30 m 1 mins	Turn right: With the Katoomba Falls track to the left and the picnic bench to the right, this walk heads north up the concrete stairs, passing a 'Greenspace Project' sign.
33.35	Int of Katoomba Kiosk Track and Prince Henry Cliff Walk -33.7265,150.3035 (GR Katoomba, 502649)	39 -18	430 m 9 mins	Veer left: From the intersection, the walk follows the 'Scenic Railway' sign along the hardened bush track, winding along the side of the hill as the track heads through the forest, to the signposted intersection of...